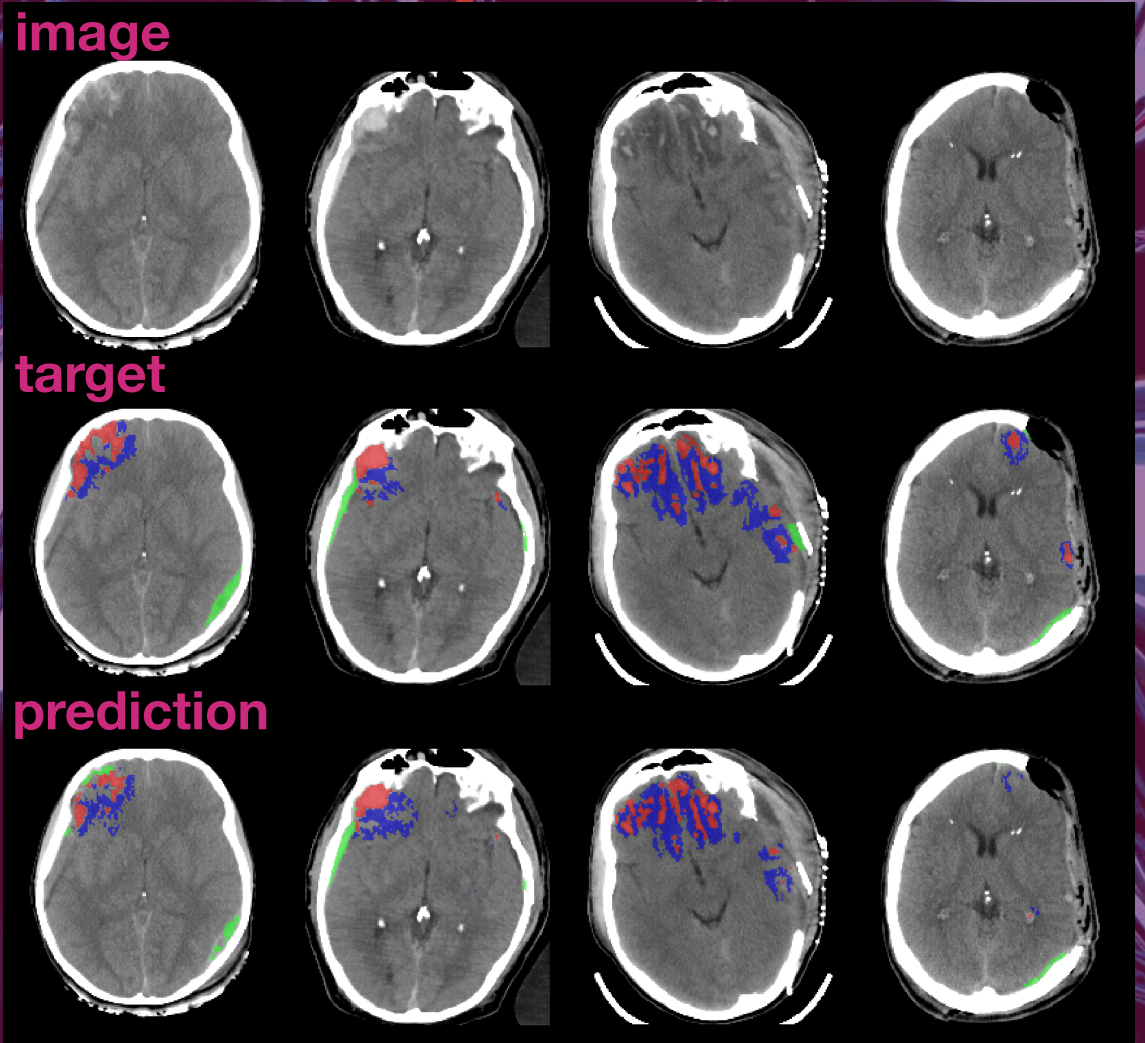


Impact of Preprocessing and Data Augmentation

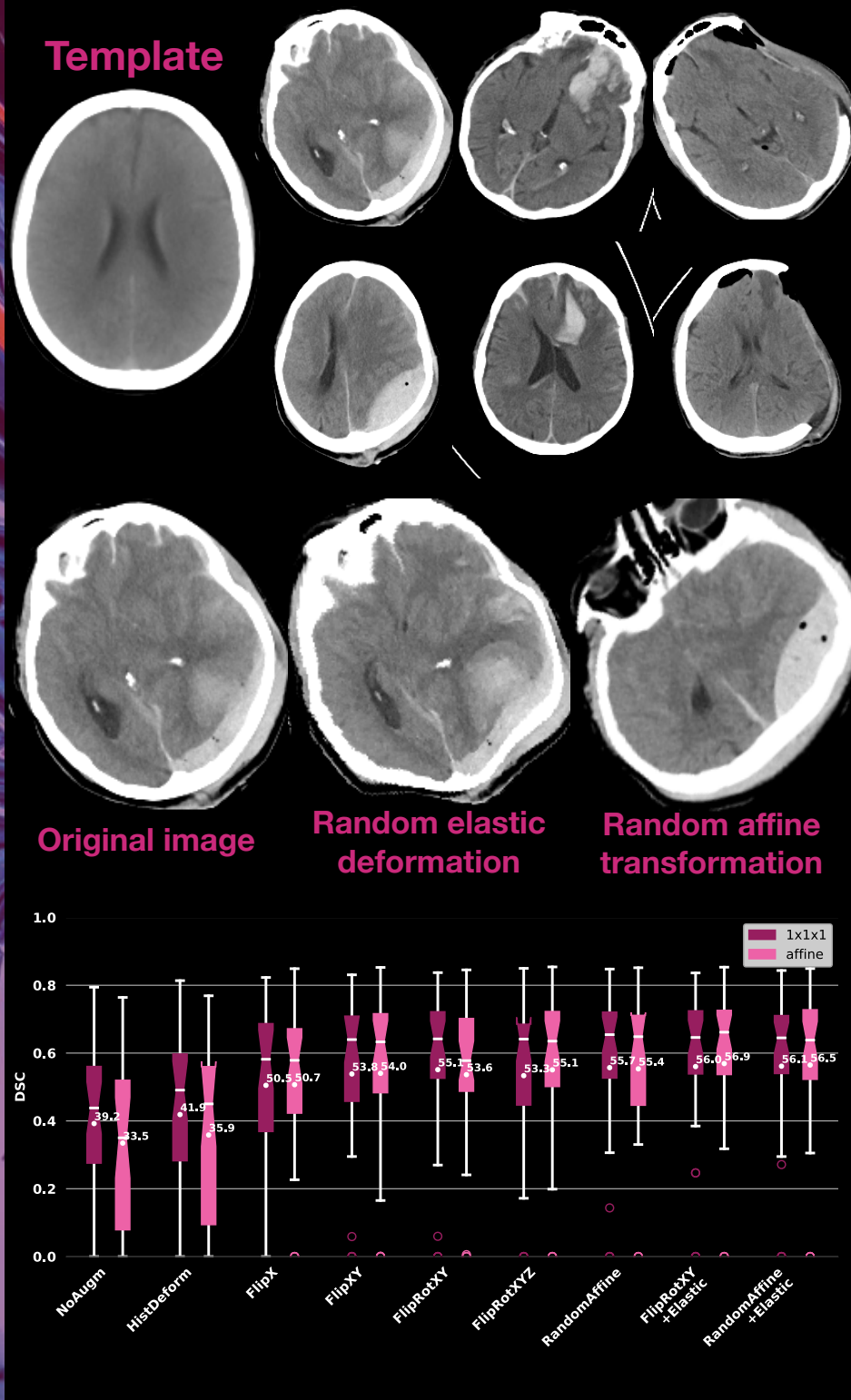
Miguel Monteiro, Konstantinos Kamnitsas, Enzo Ferrante, Francois Mathieu, Steven McDonagh, Sam Cook, Susan Stevenson, Tilak Das, Aneesh Khetani, Tom Newman, Fred Zeiler, Richard Digby, Jonathan P. Coles, Daniel Rueckert, David K. Menon, Virginia F.J. Newcombe, Ben Glocker
miguel.monteiro@imperial.ac.uk

Introduction

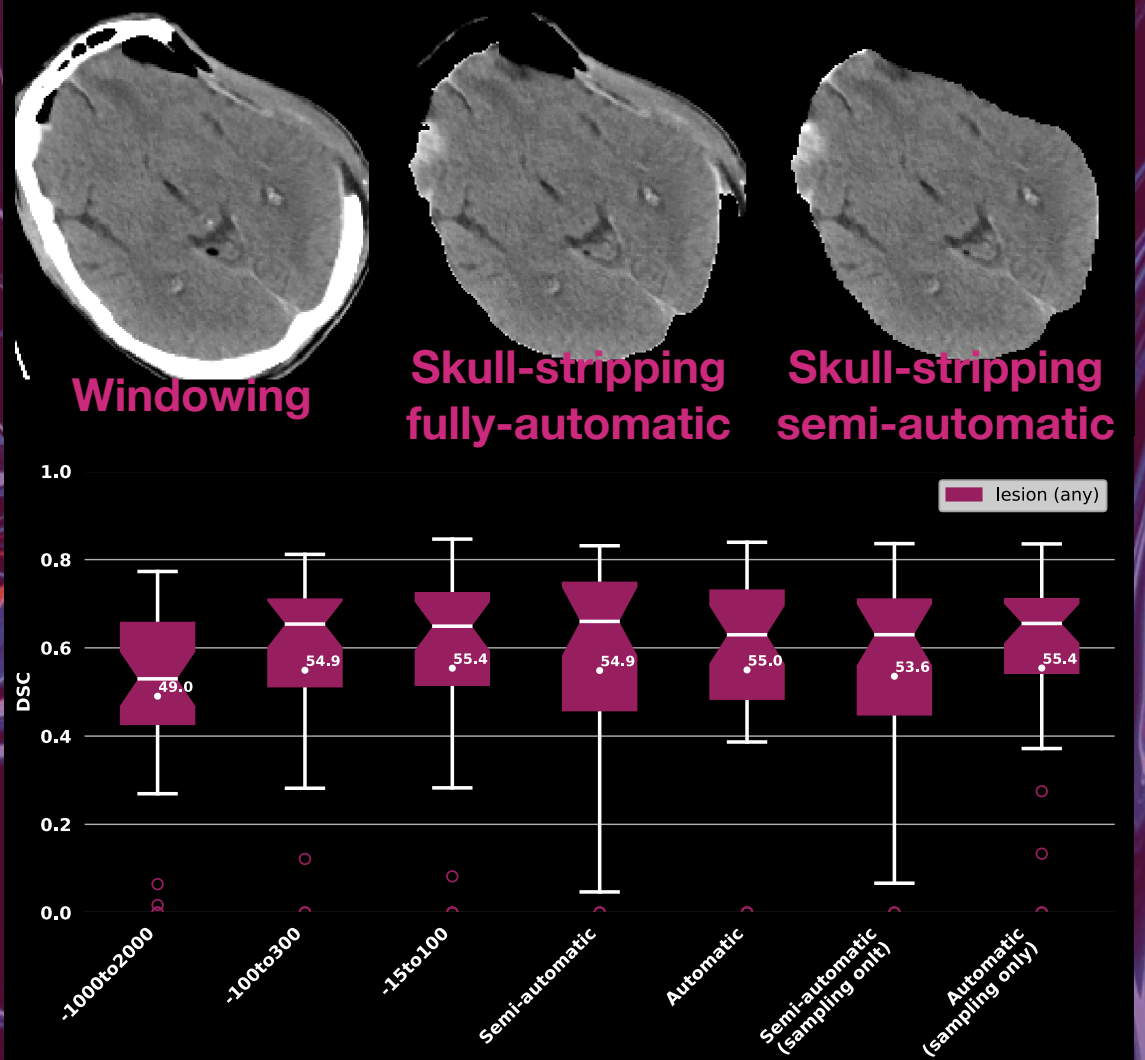
- TBI is a leading cause of death and disability worldwide with heavy socio-economic consequences;
- Preprocessing and data-augmentation can be as important as network architecture;



Affine Registration and spatial data-augmentation



Skull-stripping and intensity windowing



- Skull-stripping does not offer benefits;
- Small intensity windows are better;
- Affine registration does not offer benefits;
- Natural and artificial spatial variation can greatly benefit the segmentation.